



OUR GLOBAL
COMPETENCE
CENTRES

 APOLLO DISPLAY
TECHNOLOGIES



 DISTEC



 DISPLAY
TECHNOLOGY



Datasheet

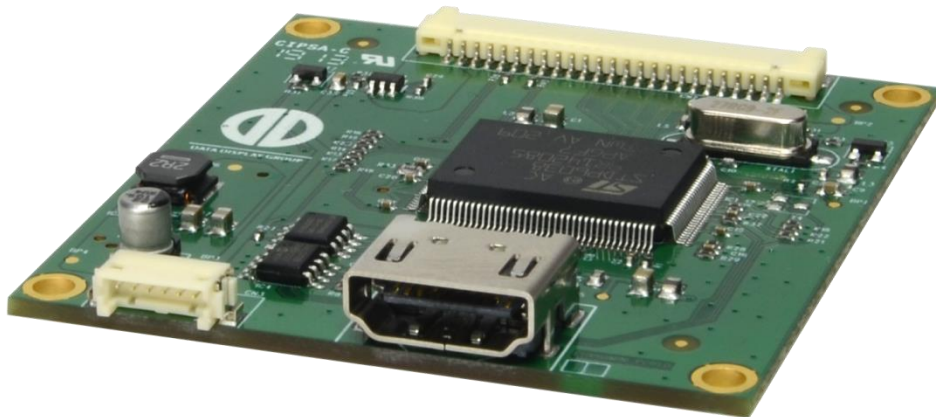
Distec

PrismaMINI-H

Simplistic TFT-LCD controller with HDMI Input

PR-01-410

PR-01-410_A1



Version 1.19

15.03.2019

The information contained in this document has been carefully researched and is, to the best of our knowledge, accurate. However, we assume no liability for any product failures or damages, immediate or consequential, resulting from the use of the information provided herein. Our products are not intended for use in systems in which failures of product could result in personal injury. All trademarks mentioned herein are property of their respective owners. All specifications are subject to change without notice.

Table of Contents

1	Revision History	4
2	Description	5
3	Input	5
4	Output	6
5	Features	6
6	Interfaces	6
7	Electrical Characteristics	7
8	Absolute Maximum Ratings	7
9	Connectors	8
9.1	Connector Overview	8
9.2	Power Connector – CN3	8
9.3	Input Connector – HDMI – CN1	8
9.4	Output Connector – LVDS – Backlight - CN2	9
10	Supported Panels and Backlights (Inverter/Converter)	9
11	Hardware Information	10
11.1	Reference KIT	10
12	Mechanical Dimensions	11

1 Revision History

Date	Rev.No.	Description	Page
05.04.2013	0.8	Initial version	All
11.04.2013	0.9	CEC note	
17.04.2013	0.99	Description, options, features, connectors	
08.05.2013	1.0	SAP number added	
10.06.2013	1.1	Electrical specification updated	
15.07.2013	1.2	3D Drawing added	
19.07.2013	1.3	Updated PCB sketch	
22.07.2014	1.4	Redefined as a generic Board	
09.10.2014	1.5	Two adapted panel models added	5
29.01.2015	1.6	One adapted panel model added	5
24.03.2015	1.7	Two adapted panel models added, Changed some PR-xx-xxx to PA-xx-xxx	5
31.03.2015	1.8	Resolution 1280x800 added; Some PA-xx-xxx numbers added	4; 5
22.04.2015	1.9	Changed 3D Drawing	10
16.12.2015	1.10	Changed Operating Temperature to -20°C..+80°C	7
		Changed Storage Temperature to -35°C..+85°C	7
		Changed Permissible Panel Current to 1.2A	7
		Changed Contact information	12
13.01.2016	1.11	Changed Operating Supply Voltage (3,3V) to 3,2V..3,45V	7
18.02.2016	1.12	Ordering Information added	6
		Operating Temperature Range for PR-01-410 added	7
25.04.2016	1.13	Company logo updated	All
		HDMI version updated	2
		Reference KIT added	10
21.07.2016	1.14	3 adapted panel models added (Ampire); Features updated	5
16.05.2017	1.15	Changed resolution from 1900x1200 to 1920x1200	4
		Added Ordering Status	10
		Removed Chapter 12 News and Updates	12
22.05.2017	1.16	Added Chapter 10 Supported Panels and Backlights	9
		Renamed Chapter 12 to Mechanical Dimensions	11
		Added a Mechanical Dimensions Table	11
24.05.2017	1.17	Renamed Ordering Information to Hardware Information	10
		Removed all panels and ordering codes	5
27.07.2017	1.18	Added reference to the remote OSD control description	5
15.03.2019	1.19	Change CN1 to Nexus 3600HFR	8
		Table CN1 corrected	8
		New form	All

2 Description

PrismaMINI-H is Data Display Group's new TFT-Controller board based on the STDP6038 (Chandler) graphic-chip. It is a cost efficient solution designed for cost sensitive applications up to 1920x1200 and no need for different inputs or other additional functionalities. PrismaMINI-H is focused on the essential: one panel - and one input type.

3 Input

PrismaMINI-H has HDMI input connection because of its wide adoption in industrial and consumer markets. It is also handy to use with DVI inputs using an adapter.

STDP6038 (Chandler) chip has an ultra-reliable HDMI 1.4 receiver

Other key features are

- Single Link TMDS Rx for up to 12-bit 1080p
- Captures up to 225MHz
- Direct connect to all HDMI compliant TMDS transmitters
- Option: HDCP
- No CEC

Supported Input Resolutions
640 x 480 @ 60 Hz (VESA)
800 x 600 @ 60 Hz (VESA)
720 x 480 @ 60 Hz (Video)
720 x 576 @ 50 Hz (Video)
1024 x 768 @ 60 Hz (VESA)
1280 x 720 @ 50 Hz (Video)
1280 x 720 @ 60 Hz (Video)
1280 x 768 @ 60 Hz
1280 x 800 @ 60 Hz
1280 x 1024 @ 60 Hz (VESA)
1360 x 768 @ 60 Hz
1366 x 768 @ 60 Hz
1368 x 768 @ 60 Hz
1600 x 1200 @ 60 Hz (VESA)
1920 x 1080 @ 50 Hz (Video)
1920 x 1080 @ 60 Hz
1920 x 1200 @ 60 Hz

4 Output

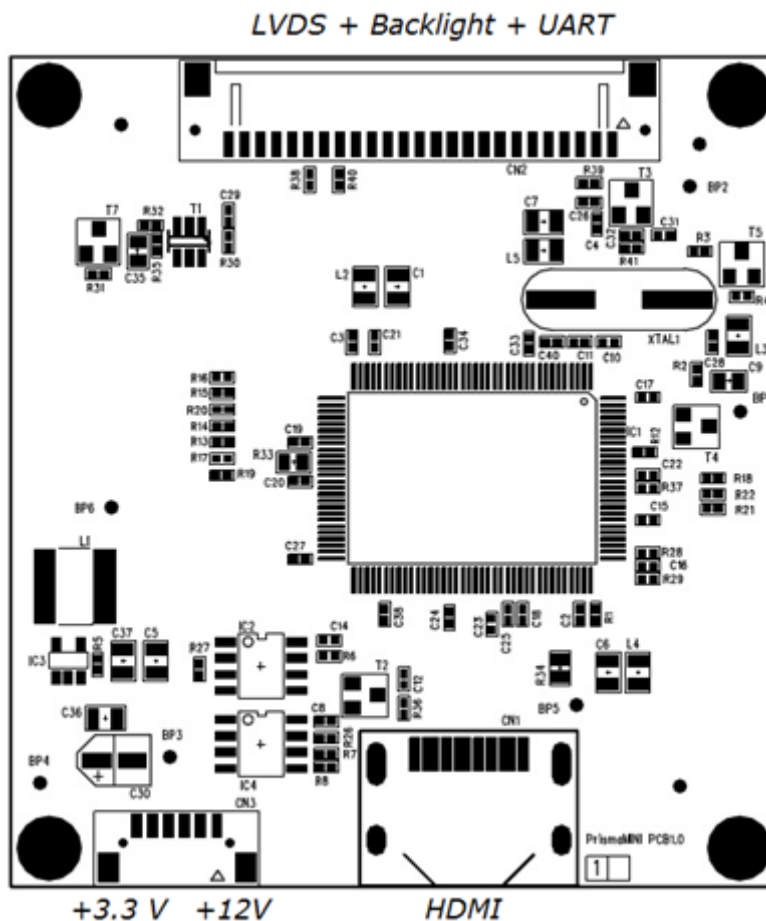
Output is single channel LVDS. To simplify installation one connector is used for panel, backlight and UART (serial) connections.

Brightness controlled by PWM and value is fixed in firmware. It can be changed over serial port or by firmware update. Please refer to Remote_OSD_Description.doc for remote OSD-Control description.

5 Features

- No OSD menu usability due to no buttons, but full remote control OSD (all commands; please request command set file)
- Remote control via RS-232 interface (TTL level)
- Firmware update over serial port
- Other versions: PrismaMINI-HDMI/DisplayPort

6 Interfaces



7 Electrical Characteristics

All measurements done at 25°C ambient temperature.

Item	Condition	MIN.	TYP.	MAX.	Unit	Note
Supply Voltage (12V)		11.7	12.0	12.3	VDC	
Supply Voltage (3.3V)		3.2	3.3	3.45	VDC	
Current Consumption (12V)	Board Only	-	290	360	uA	
Current Consumption (3.3V)	Board Only	-	180	225	mA	

8 Absolute Maximum Ratings

Item	Symbol	Min.	Max.	Unit	Note
Supply Voltage	$V_{in(12V)}$	0	14	VDC	1, 2,3
Permissible Backlight Current	$I_{out(12V)}$		2	A	
Supply Voltage	$V_{in(3.3V)}$	0	3.6	VDC	1, 2,3
Permissible Panel Current	$I_{out(3.3V)}$		1.2	A	
Storage Temperature	T_{St}	-35	+85	°C	
Operating Temperature	T_{Op}	0 -20	+70 +80	°C	PR-01-410 PR-01-410_A1

Note (1) Within operating temperature range.

Note (2) Supply voltage limits are for the PrismaMINI-H. The backlight of the panel is to be powered through the PrismaMINI-H board.

Note (3) Permanent damage to the device may occur if maximum values are exceeded.

9 Connectors

9.1 Connector Overview

CN	DESCRIPTION	TYPE (Ref only)	MANUFACTURER (Ref only)
CN1	HDMI Input	3600HFR	Nexus
CN2	LVDS – Backlight	DF14-25P-1.25H	Hirose
CN3	Power input	DF13-6P-1.25H	Hirose

9.2 Power Connector – CN3

POWER CONNECTOR CN3		
Pin	Signal	Description
1	VIN_12V	Power in +12V
2		
3	GND	Ground
4		
5	VIN_3V	Power in +3,3V
6		

9.3 Input Connector – HDMI – CN1

HDMI CONNECTOR CN1		
Pin	Signal	Description
1	TMDS2+	Differential TMDS Data 2+
2	GND	Ground
3	TMDS2-	Differential TMDS Data 2-
4	TMDS1+	Differential TMDS Data 1+
5	GND	Ground
6	TMDS1-	Differential TMDS Data 1-
7	TMDS0+	Differential TMDS Data 0+
8	GND	Ground
9	TMDS0-	Differential TMDS Data 0-
10	TMDSCLK+	Differential TMDS Clock+

Pin	Signal	Description
11	GND	Ground
12	TMDSCLK-	Differential TMDS Clock-
13	CEC	Consumer Electronic Control
14	Reserved	
15	HDMI_SCL	DDC Clock
16	HDMI_SDA	DDC Data
17	HDMI_PLUG	Connect it to GND for cable detection
18	HDMI_VCC	+5V
19	Hot Plug	Hot Plug Detection

9.4 Output Connector – LVDS – Backlight - CN2

LVDS CONNECTOR CN2		
Pin	Signal	Description
1	SVCC	Switched panel power supply +3,3V
2		
3	GND	Ground
4		
5	TXA3+	LVDS data
6	TXA3-	LVDS data
7	TXACLK+	LVDS clock
8	TXACLK-	LVDS clock
9	TXA2+	LVDS data
10	TXA2-	LVDS data
11	TXA1+	LVDS data
12	TXA1-	LVDS data
13	TXA0+	LVDS data
14	TXA0-	LVDS data
15	LVDS_OPT	LVDS Option
16	GND	Ground
17	U_TX	UART TX
18	U_RX	UART RX
19	GND	Ground
20	BKL_EN	Backlight Enable
21	BKL_ADJ	Backlight PWM
22	GND	Ground
23		
24	BKL_VCC	+12V Backlight Power supply
25		

10 Supported Panels and Backlights (Inverter/Converter)

Panels and Backlights Options (Note 1)	Hardware Options
Panel Voltage (SVCC) (Note 1)	3,3V (Ext. Source)
Pixel Per Clock	1
Backlight Voltage (BKL_VCC)	12V
Backlight Control Type	PWM
Voltage Level of PWM Signal (BKL_ADJ)	3,3V
Voltage Level of Backlight Enable Signal (BKL_EN)	3,3V

Note (1): The Panel Power Supply Input (VIN_3V) is switched through to the Panel SVCC.

11 Hardware Information

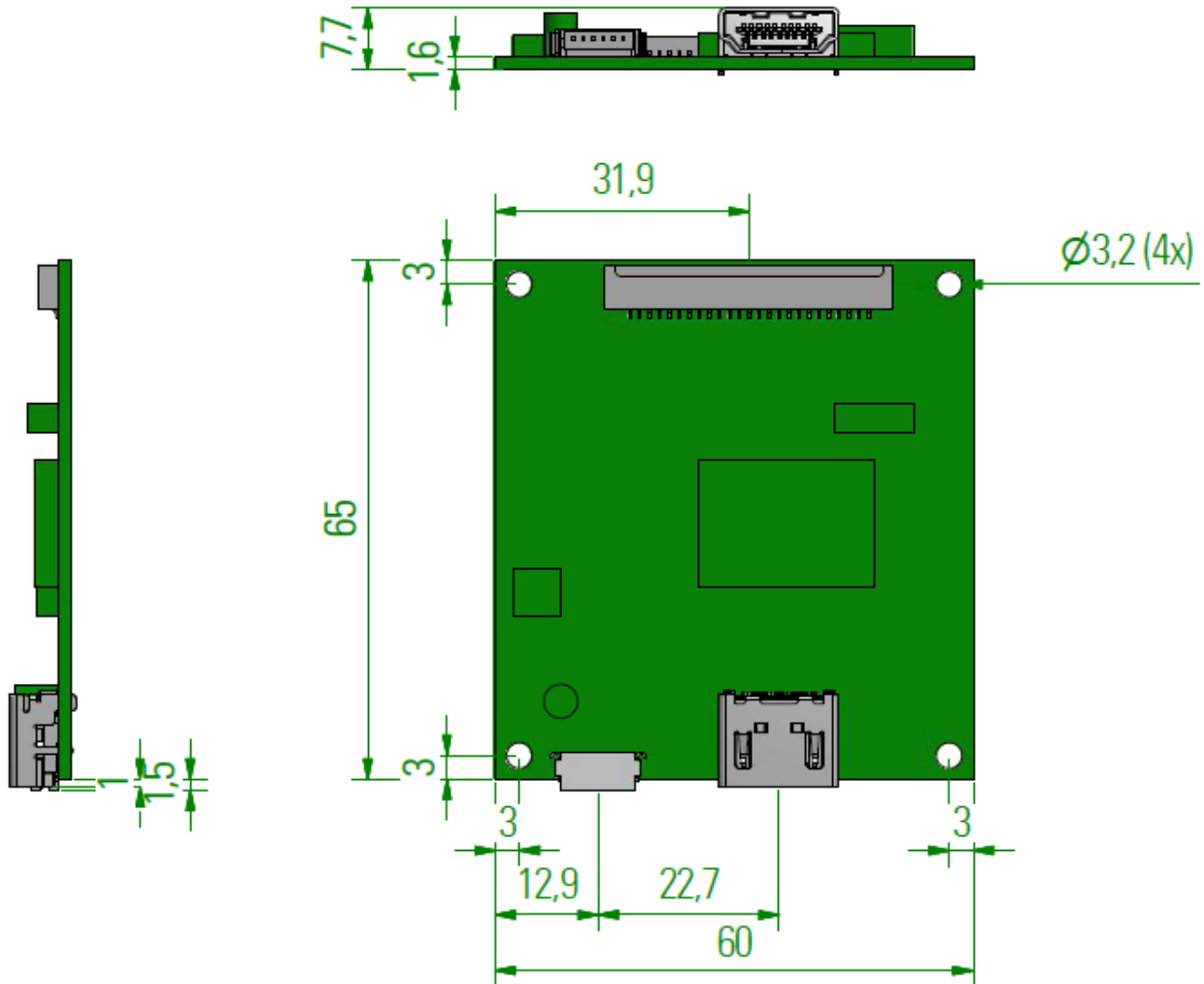
Part Number	Operating Temperature Range	Status
PR-01-410	0..+70°C	Obsolete
PR-01-410_A1	-20..+80°C	Active

11.1 Reference KIT

Please note the serial programming interface on PrismaMini is shared with CN2 LVDS connector.

Ordering Code	Description	Comment
CH-01-023R1.1	G070Y2-L01 Rev.C2 7,0/WVGA/500cd+C	
PA-03-100	PrismaMINI-H-00/G070Y2-L01	
KA-30-409	Cable PrismaMini/G070Y2-L01 300mm	Including programming interface connector.
KA-30-408	Cable Power PrismaMini/open end 500mm	
ZU-02-370	IF370-00-R10programingadap.Pris./Art.NET	optional
ZV-90-026	Software ChandlerRover Windows	optional

12 Mechanical Dimensions



Item	Description	Remarks
Length	60 mm	± 0.2 mm
Width	65 mm	± 0.2 mm
Height	7.7 mm	+ 0.3 mm
Weight	21 g	

Our company network supports you worldwide with offices in Germany, Austria, Switzerland, the UK and the USA. For more information please contact:

Headquarters

Germany



FORTEC Elektronik AG

Lechwiesenstr. 9
86899 Landsberg am Lech

Phone: +49 8191 91172-0
E-Mail: sales@forteca.de
Internet: www.forteca.de

Fortec Group Members

Austria



FORTEC Elektronik AG

Office Vienna

Nuschinggasse 12
1230 Wien

Phone: +43 1 8673492-0
E-Mail: office@fortec.at
Internet: www.fortec.at

Germany



Distec GmbH

Augsburger Str. 2b
82110 Germering

Phone: +49 89 894363-0
E-Mail: info@distec.de
Internet: www.distec.de

Switzerland



ALTRAC AG

Bahnhofstraße 3
5436 Würenlos

Phone: +41 44 7446111
E-Mail: info@altrac.ch
Internet: www.altrac.ch

United Kingdom



Display Technology Ltd.

Osprey House, 1 Osprey Court
Hichingbrooke Business Park
Huntingdon, Cambridgeshire, PE29 6FN

Phone: +44 1480 411600
E-Mail: info@displaytechnology.co.uk
Internet: www.displaytechnology.co.uk

USA



Apollo Display Technologies, Corp.

87 Raynor Avenue,
Unit 1 Ronkonkoma,
NY 11779

Phone: +1 631 5804360
E-Mail: info@apolloDisplays.com
Internet: www.apolloDisplays.com