



OUR GLOBAL
COMPETENCE
CENTRES

 APOLLO DISPLAY
TECHNOLOGIES



 DISTEC



 DISPLAY
TECHNOLOGY

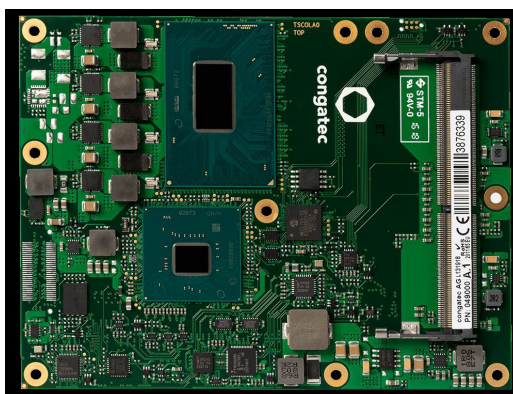


Datasheet

congatec

conga-TS370

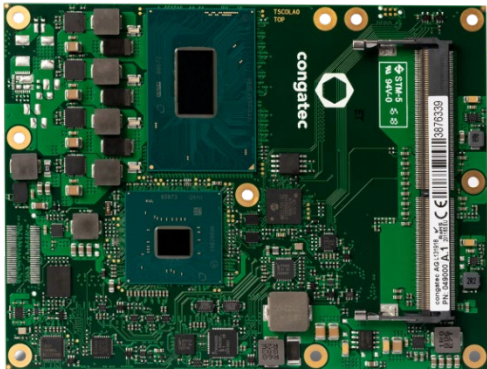
COM Express Basic Type 6 Module with 8th Gen. Intel® Core™ i / Xeon® Processor



The information contained in this document has been carefully researched and is, to the best of our knowledge, accurate. However, we assume no liability for any product failures or damages, immediate or consequential, resulting from the use of the information provided herein. Our products are not intended for use in systems in which failures of product could result in personal injury. All trademarks mentioned herein are property of their respective owners. All specifications are subject to change without notice.

HIGH PERFORMANCE COMPUTING

conga-TS370



- 8th Generation Intel® Core™ processor series with up to 6 cores
- Intel® Xeon® processors for data center applications
- Support for USB 3.1 Gen2 with 10Gb/s
- Up to 64 GByte dual channel DDR4 memory
- ECC memory support

COM  **Express®**

Form factor

COM Express® Basic, (95 x 125 mm) | Type 6 connector pinout

Processor

Intel® Core™ i7-9850HE	2.7 GHz 4.4 GHz (boost)	6 cores	9 MB cache	45 W TDP (35 W cTDP)
Intel® Core™ i7-9850HL	1.9 GHz 4.1 GHz (boost)	6 cores	9 MB cache	35 W TDP (25 W cTDP)
Intel® Core™ i3-9100HL	1.6 GHz 2.9 GHz (boost)	4 cores	6 MB cache	25 W TDP
Intel® Xeon® E-2276ME	2.8 GHz 4.5 GHz (boost)	6 cores	12 MB cache	45 W TDP (35 W cTDP)
Intel® Xeon® E-2276ML	2.0 GHz 4.2 GHz (boost)	6 cores	12 MB cache	35 W TDP (25 W cTDP)
Intel® Xeon® E-2254ME	2.6 GHz 3.8 GHz (boost)	4 cores	8 MB cache	45 W TDP (35 W cTDP)
Intel® Xeon® E-2254ML	2.7 GHz 4.4 GHz (boost)	4 cores	8 MB cache	35 W TDP (25 W cTDP)
Intel® Core™ i7-8850H	2.6 GHz 4.3 GHz (boost)	6 cores	9 MB cache	45 W TDP (35 W cTDP)
Intel® Core™ i5-8400H	2.5 GHz 4.2 GHz (boost)	4 cores	8 MB cache	45 W TDP (35 W cTDP)
Intel® Core™ i3-8100H	3.0 GHz	4 cores	6 MB cache	45 W TDP (35 W cTDP)
Intel® Xeon® E-2176M	2.7 GHz 4.4 GHz (boost)	6 cores	12 MB cache	45 W TDP (35 W cTDP)
Intel® Celeron® G4932E	1.9 GHz	2 cores	2 MB cache	25 W TDP
Intel® Celeron® G4930E	2.4 GHz	2 cores	2 MB cache	35 W TDP

Intel® Turbo Boost Technology | Intel® Hyper-Threading Technology | Intel® Advanced Vector Extensions 2.0 (Intel® AVX2) | Intel® Advanced Encryption Standard New Instructions (Intel® AES-NI) | Integrated Intel® Gen 9 HD Graphics | Intel® Clear Video HD Technology | Intel® Virtualization Technology (Intel® VT) | Intel® Trusted Execution Technology (Intel® TXT) | Intel® Secure Key

DRAM

Dual channel DDR4 up to 2666 MT/s | 2x SO-DIMM | up to 2x 32 GByte (optionally with ECC support for Intel® Xeon®)

Chipset

Mobile Intel® PCH-H QM370 series or CM246 series for Intel® Xeon® processor

Ethernet

Intel® i219-LM GbE LAN controller with AMT 12.0 support

I/O Interfaces

8x PCI Express™ Gen 3.0 lanes | 1x PEG x16 Gen 3 | 4x SATA Gen 3 | 4x USB 3.1 Gen 2 @ 10 Gbit/s | 8x USB 2.0 | LPC bus | I²C bus (fast mode, 400 kHz, multi-master) | 2x UART

Sound

Digital High Definition Audio Interface with support for multiple audio codecs

Graphics

Intel® Gen9 HD Graphics Engine with OpenCL 2.0, OpenGL 4.3/4.4 and DirectX 11/12 | up to three independent displays: HDMI 1.4a / DisplayPort 1.2 / eDP 1.4 | MPEG-2, WMV9 (VC-1), H.265 decoding | HEVC, VP9 encoding

LVDS / eDP

Dual channel LVDS transmitter, Supports flat panels 2x24 Bit interface | VESA and openLDI color mappings | resolutions up to 1920x1200 | Automatic Panel Detection via EDID/EPI | LVDS or eDP switchable in BIOS setup

Digital Display Interface

3x HDMI 1.4a / DisplayPort 1.2 with support for Multi-Stream Transport (MST) | resolutions up to 4k | VGA support

congatec Board Controller

Multi Stage Watchdog | non-volatile User Data Storage | Manufacturing and Board Information | Board Statistics | BIOS Setup Data Backup | I²C bus (fast mode, 400 kHz, multi-master) | Power Loss Control

Embedded BIOS Features

AMI Aptio® UEFI 2.x firmware | 32 MByte serial SPI firmware flash

Security

TPM 2.0 Infineon SLB9665

Power Management

ACPI 4.0 with battery support, configurable TDP

Operating Systems

Microsoft® Windows 10 (64bit only) | Microsoft® Windows 10 IoT Enterprise (64bit only) | Linux

Power Consumption

See User's Guide for full details

Temperature

Operating: 0 to +60°C Storage: -40 to +85°C

Extended Temperature

Screening service on request: -25 to +80°C (burn-in & cold-soak)
-40 to +85°C (burn-in & cold-soak)

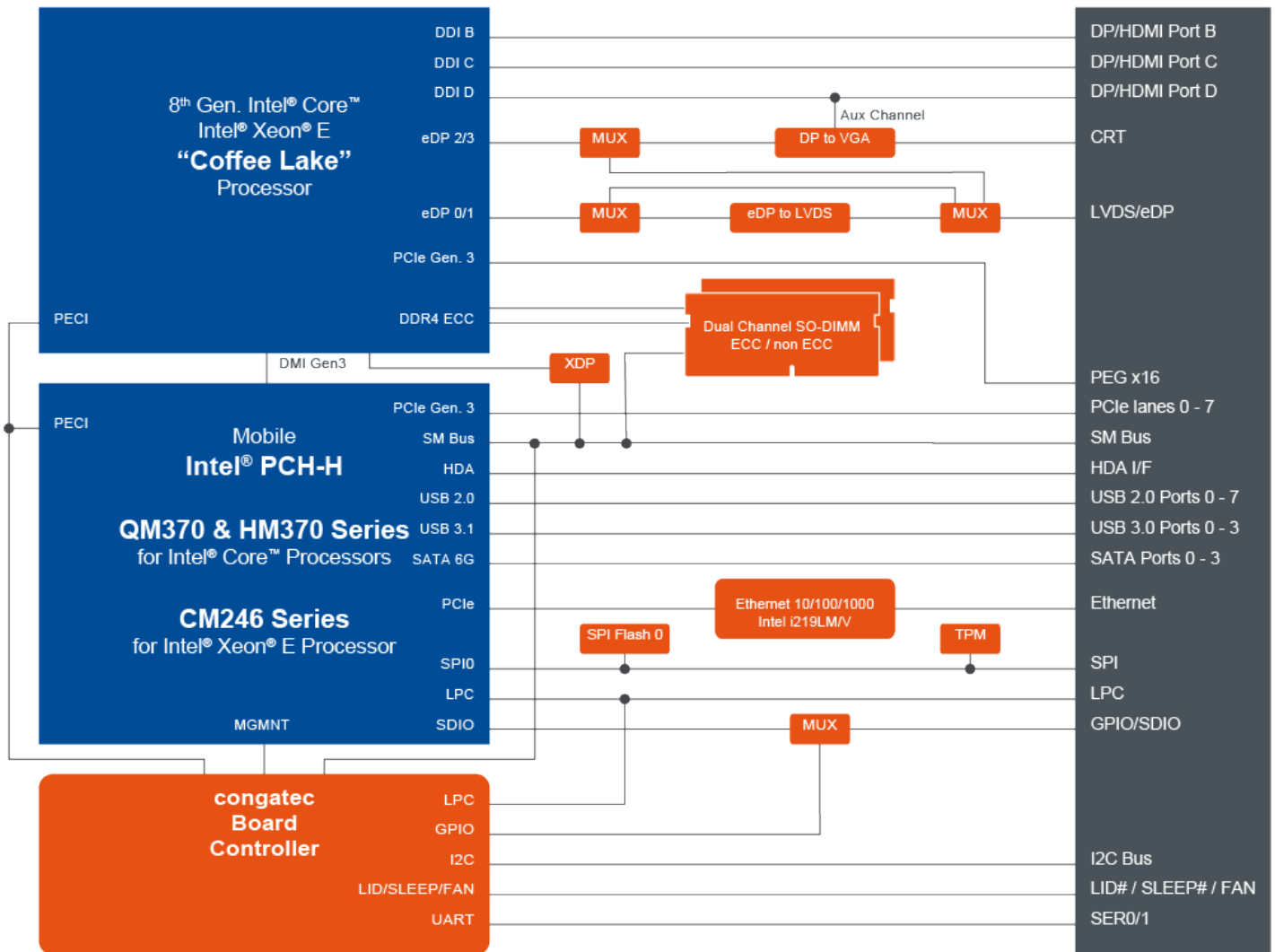
Humidity

Operating: 10 - 90% r. H. non cond. Storage: 5 - 95% r. H. non cond.

Size

95 x 125 mm (3.74" x 4.92")

conga-TS370 | Block Diagram



conga-TS370 | Order Information – COM Express® Module

Article	PN	Description
conga-TS370/i7-9850HE	049102	COM Express Type 6 Basic module based on Intel® Core™ i7-9850HE 6-core processor with 2.7GHz up to 4.4GHz turbo boost, 12MB Intel® Smart Cache, Intel® UHD Graphics 630 and dual channel DDR4 2666 MT/s memory interface (formerly Coffee Lake-H Refresh). Chipset QM370.
conga-TS370/i7-9850HL	049112	COM Express Type 6 Basic module based on Intel® Core™ i7-9850LE 6-core processor with 1.9GHz up to 4.1GHz turbo boost, 12MB Intel® Smart Cache, Intel® UHD Graphics 630 and dual channel DDR4 2666 MT/s memory interface (formerly Coffee Lake-H Refresh). Chipset QM370.
conga-TS370/i3-9100HL	049113	COM Express Type 6 Basic module based on Intel® Core™ i3-9100HL 4-core processor with 1.6GHz up to 2.9GHz turbo boost, 12MB Intel® Smart Cache, Intel® UHD Graphics 630 and dual channel DDR4 2666 MT/s memory interface (formerly Coffee Lake-H Refresh). Chipset HM370.
conga-TS370/E-2276ME	049100	COM Express Type 6 Basic module based on Intel® Xeon® E-2276ME 6-core processor with 2.8GHz up to 4.5GHz turbo boost, 12MB Intel® Smart Cache, Intel® UHD Graphics P630 and dual channel DDR4 2666 MT/s ECC memory interface (formerly Coffee Lake-H Refresh). Chipset CM246.
conga-TS370/E-2276ML	049110	COM Express Type 6 Basic module based on Intel® Xeon® E-2276ML 6-core processor with 2.0GHz up to 4.2GHz turbo boost, 12MB Intel® Smart Cache, Intel® UHD Graphics P630 and dual channel DDR4 2666 MT/s ECC memory interface (formerly Coffee Lake-H Refresh). Chipset CM246.
conga-TS370/E-2254ME	049101	COM Express Type 6 Basic module based on Intel® Xeon® E-2254ME 4-core processor with 2.6GHz up to 3.8GHz turbo boost, 8MB Intel® Smart Cache, Intel® UHD Graphics P630 and dual channel DDR4 2666 MT/s ECC memory interface (formerly Coffee Lake-H Refresh). Chipset CM246.
conga-TS370/E-2254ML	049111	COM Express Type 6 Basic module based on Intel® Core™ E-2254ML 4-core processor with 1.7GHz up to 3.5GHz turbo boost, 8MB Intel® Smart Cache, Intel® UHD Graphics P630 and dual channel DDR4 2666 MT/s ECC memory interface (formerly Coffee Lake-H Refresh). Chipset CM246.
conga-TS370/G4930E	049104	COM Express Type 6 Basic module based on Intel® Celeron® Processor G4930E 2-core processor with 2.4GHz, 2MB Intel® Smart Cache, Intel® UHD Graphics 610 and dual channel DDR4 2400 MT/s memory interface (formerly Coffee Lake-H Refresh). Chipset HM370.
conga-TS370/G4932E	049114	COM Express Type 6 Basic module based on Intel® Celeron® Processor G4832E 2-core processor with 1.9GHz, 2MB Intel® Smart Cache, Intel® UHD Graphics 610 and dual channel DDR4 2400 MT/s memory interface (formerly Coffee Lake-H Refresh). Chipset HM370.
conga-TS370/i7-8850H	049000	COM Express Type 6 Basic module based on Intel® Core™ i7-8850H 6-core processor with 2.6GHz up to 4.3GHz turbo boost, 9MB Intel® Smart Cache, Intel® UHD Graphics 630 and dual channel DDR4 2666 MT/s memory interface (formerly Coffee Lake-H). Chipset QM370.
conga-TS370/i5-8400H	049001	COM Express Type 6 Basic module based on Intel® Core™ i5-8400H 4-core processor with 2.5GHz up to 4.2GHz turbo boost, 8MB Intel® Smart Cache, Intel® UHD Graphics 630 and dual channel DDR4 2666 MT/s memory interface (formerly Coffee Lake-H). Chipset QM370.
conga-TS370/i3-8100H	049003	COM Express Type 6 Basic module based on Intel® Core™ i3-8100H 4-core processor with 3.0GHz, 6MB Intel® Smart Cache, Intel® UHD Graphics 630 and dual channel DDR4 2666 MT/s memory interface (formerly Coffee Lake-H). Chipset HM370.
conga-TS370/E-2176M	049002	COM Express Type 6 Basic module based on Intel® Xeon® E-2176M 6-core processor with 2.7GHz up to 4.4GHz turbo boost, 12MB Intel® Smart Cache, Intel® UHD Graphics P630 and dual channel DDR4 2666 MT/s ECC memory interface (formerly Coffee Lake-H). Chipset CM246.

conga-TS370 | Order Information – Accessory

Article	PN	Description
conga-TS170/CSA-HP-B	045930	Standard active cooling solution for high performance COM Express modules conga-TS170/TS175 with integrated heat pipes, 15mm silver fins, 21mm overall heat sink height and integrated 12V fan. All standoffs are with 2.7mm bore hole.
conga-TS170/CSA-HP-T	045931	Standard active cooling solution for high performance COM Express modules conga-TS170/TS175 with integrated heat pipes, 15mm silver fins, 21mm overall heat sink height and integrated 12V fan. All standoffs are M2.5mm thread.
conga-TS170/CSP-HP-B	045932	Standard passive cooling solution for high performance COM Express modules conga-TS170/TS175 with integrated heat pipes, 15mm silver fins and 21mm overall heat sink height. All standoffs are with 2.7mm bore hole.
conga-TS170/CSP-HP-T	045933	Standard passive cooling solution for high performance COM Express modules conga-TS170/TS175 with integrated heat pipes, 15mm silver fins and 21mm overall heat sink height. All standoffs are M2.5mm thread.
conga-TS170/HSP-HP-B	045934	Standard heat spreader for high performance COM Express modules conga-TS170/TS175 with integrated heat pipes. All standoffs are with 2.7mm bore hole.
conga-TS170/HSP-HP-T	045935	Standard heat spreader for high performance COM Express modules conga-TS170/TS175 with integrated heat pipes. All standoffs are M2.5mm thread.
DDR4-SODIMM-2666 (4GB)	067780	DDR4 SODIMM memory module with 2666 MT/s and 4GB RAM
DDR4-SODIMM-2666 (8GB)	067781	DDR4 SODIMM memory module with 2666 MT/s and 8GB RAM
DDR4-SODIMM-2666 (16GB)	067782	DDR4 SODIMM memory module with 2666 MT/s and 16GB RAM
DDR4-SODIMM-2666 (32GB)	068806	DDR4 SODIMM memory module with 2666 MT/s and 32GB RAM
DDR4-SODIMM-2666 ECC (4GB)	067783	DDR4 ECC SODIMM memory module with 2666 MT/s and 4GB RAM
DDR4-SODIMM-2666 ECC (8GB)	067784	DDR4 ECC SODIMM memory module with 2666 MT/s and 8GB RAM
DDR4-SODIMM-2666 ECC (16GB)	067785	DDR4 ECC SODIMM memory module with 2666 MT/s and 16GB RAM
DDR4-SODIMM-2666 ECC (32GB)	068805	DDR4 ECC SODIMM memory module with 2666 MT/s and 32GB RAM

Our company network supports you worldwide with offices in Germany, Austria, Switzerland, the UK and the USA. For more information please contact:

Headquarters

Germany



FORTEC Elektronik AG

Augsburger Str. 2b
82110 Germering

Phone: +49 89 894450-0
E-Mail: info@fortecag.de
Internet: www.fortecag.de

Fortec Group Members

Austria



Distec GmbH Office Vienna

Nuschinggasse 12
1230 Wien

Phone: +43 1 8673492-0
E-Mail: info@distec.de
Internet: www.distec.de

Germany



Distec GmbH

Augsburger Str. 2b
82110 Germering

Phone: +49 89 894363-0
E-Mail: info@distec.de
Internet: www.distec.de

Switzerland



ALTRAC AG

Bahnhofstraße 3
5436 Würenlos

Phone: +41 44 7446111
E-Mail: info@altrac.ch
Internet: www.altrac.ch

United Kingdom



Display Technology Ltd.

Osprey House, 1 Osprey Court
Hichingbrooke Business Park
Huntingdon, Cambridgeshire, PE29 6FN

Phone: +44 1480 411600
E-Mail: info@displaytechnology.co.uk
Internet: www.displaytechnology.co.uk

USA



Apollo Display Technologies, Corp.

87 Raynor Avenue,
Unit 1 Ronkonkoma,
NY 11779

Phone: +1 631 5804360
E-Mail: info@apolloDisplays.com
Internet: www.apolloDisplays.com