



DATA DISPLAY GROUP

Manual

Artista Driver Setup for Windows™

Rev 5.0
September 15, 2014

The information provided in this document has been carefully checked and believed to be reliable. However, Distec takes no responsibility for any failure or product damage caused by the application of this information. Please check all connections carefully against the data sheet. Distec products are not intended for use in systems where product failures could possibly result in personal injury. All trademarks contained in this document are registered trademarks of their respective owners.

All specifications are subject to change without notice.

Table of Contents

1	Revision History.....	3
2	Getting started – Quick Installation Guide.....	4
3	Artista Driver Installation	4
3.1.1	ArtistaMainClassWdf driver installation	5
3.1.2	ArtistaDesktop3D driver.....	8
3.1.2.1	Desktop Assignment	8
3.1.2.2	ArtistaDesktop3D driver installation	9
3.1.3	Installation on Windows 8.1	12
4	Uninstalling the drivers	13
5	Artista Graphics Driver Usage	14
5.1.1	Attach / Detach Artista Devices.....	14
5.1.2	Artista Devices in the Device Manager	15
5.1.3	Adjusting the backlight	15
6	Touch screen handling	15
7	News and Updates.....	16

1 Revision History

Date	Rev.No.	Description	Page
27/03/2007	1.0	Initial draft	
14/09/2007	1.1	Revised edition	
04/08/2008	2.0	Vista support	
15/12/2008	x.x	Additions	
08/01/2009	2.1	Revised ArtistaNET hardware reset information	19
28/01/2009	2.2	Documentation alignments and content menu revised	
23/03/2009	2.4	Documentation only for Artista Driver install and setup	
19/06/2009	2.5	Textual fixes and additions	---
27/08/2009	2.6	Textual updates	---
13/10/2009	2.7	New pictures added and textual changes for new driver 4.0	---
10/12/2009	2.8	Textual updates	
19/05/2010	2.9	Changes due to removed WindowsVista support	
12/07/2010	3.0	Windows 7 support revision	
06/08/2010	3.1	Minor fixes in textuials because of misunderstanding	5, 11
01/10/2010	3.2	Windows 7 64bit additions	4, 5, 11, 18
13/10/2010	3.3	Fixed some misunderstandings in text	
18/11/2010	3.4	Added notes for dynamic/static mode support in Windows 7	
17/03/2011	3.5	Textual updates	1,14
28/02/2012	3.6	Textual updates of company contact informations	last
24/04/2012	4.0	Release of 6.o.o.xxxxx driver / Fitting of manual	
26/07/2012	4.1	Textual updates, added table of driver modules	
22/01/2013	4.2	Added Windows 8 support	
29/01/2013	4.3	Removed WinXP support	
07/05/2013	4.4	Removed ArtistaNET support	
15/09/2014	5.0	Release of 8.o.o.xxxx driver / Fitting of manual	All

2 Getting started – Quick Installation Guide

This chapter is intended to provide fast and easy access to our Artista™ series devices.

The following operating systems are supported by our software:

- Windows 7 32/64bit
- Windows 8 32/64bit
- Windows 8.1 32/64bit (using additional Setup script)

To install and setup an Artista device, follow these steps:

On 64bit versions of Windows 7/8, please use the appropriate driver packages with “x64” endings!

1. Ensure that network cable is connected before board is powered up
2. Install the base driver package
 - First, always install the “**ArtistaMainClassWdf**” driver!
 - To use the Windows desktop extension functionality, additionally install the “**ArtistaDesktop3D**” driver
 - Choose “Static” or “Dynamic” assignment (see [Chapter 3.1.3.1](#) for details)
 - Reboot your system
3. Connect the Artista device to your system.
4. The device installation runs automatically.

3 Artista Driver Installation

Installation CD autorun menu

We provide an easy to understand installation interface, which will automatically appear as soon as the driver CD is being inserted and the autorun feature of your PC is enabled.

If not, click on the included “autorun.exe” file in the root folder of your CD.

Selecting the appropriate driver

On 64bit versions of Windows 7/8, please use the appropriate driver packages with “x64” endings!

1. Install the “**ArtistaMainClassWdf**” driver
2. If you wish to use the **Windows Graphics Driver** please install the additional package:
 - **ArtistaDesktop3D (default: dynamic mode)**

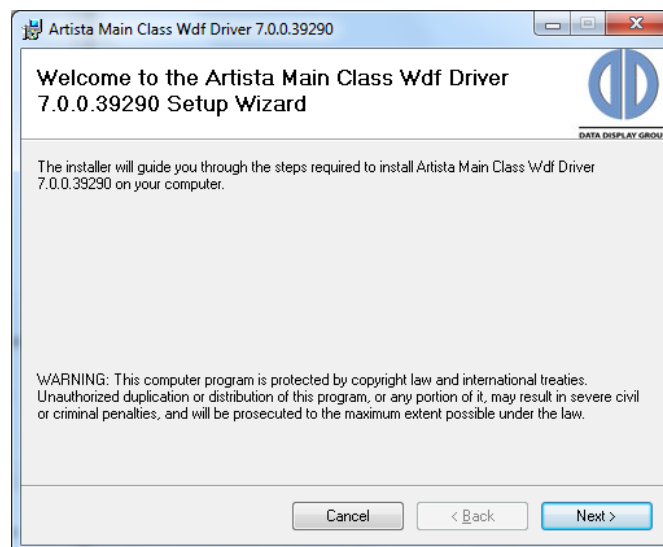
	Windows 7/8/8.1 (32bit)	Windows 7/8/8.1 (64bit)
	ArtistaUSB	ArtistaUSB
ArtistaMainClassWdf	✓	
ArtistaDesktop3D	optional	
ArtistaMainClassWdfx64		✓
ArtistaDesktop3Dx64		optional

3.1.1 ArtistaMainClassWdf driver installation

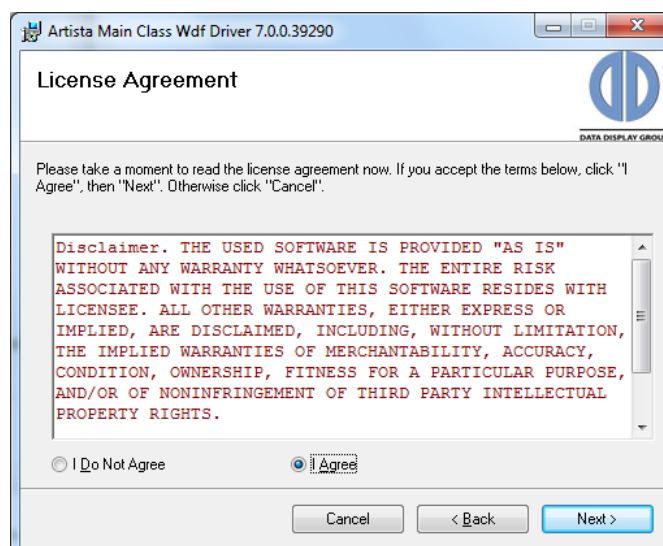
Note: Please ensure that no Artista device is connected to your system during the driver package installation phase.

The **ArtistaMainClassWdf** driver provides the basic driver functionality needed for the applications created with the **ArtistaSDK**.

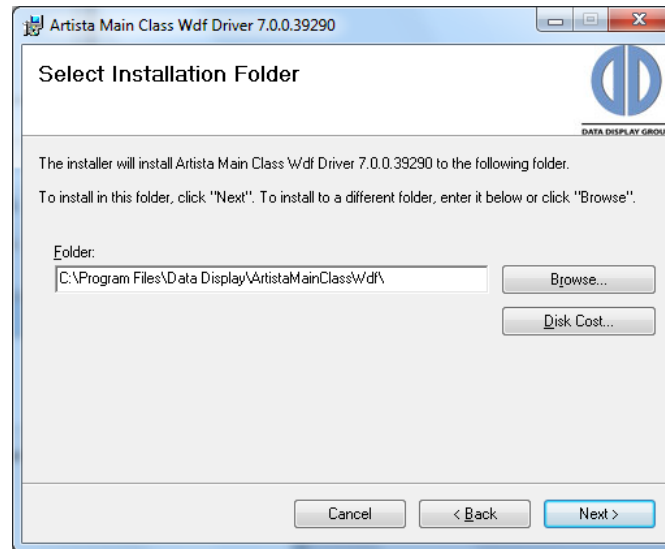
Select the 32/64bit version of the Artista Main Class Driver from "ArtistaMainClass_Driver".



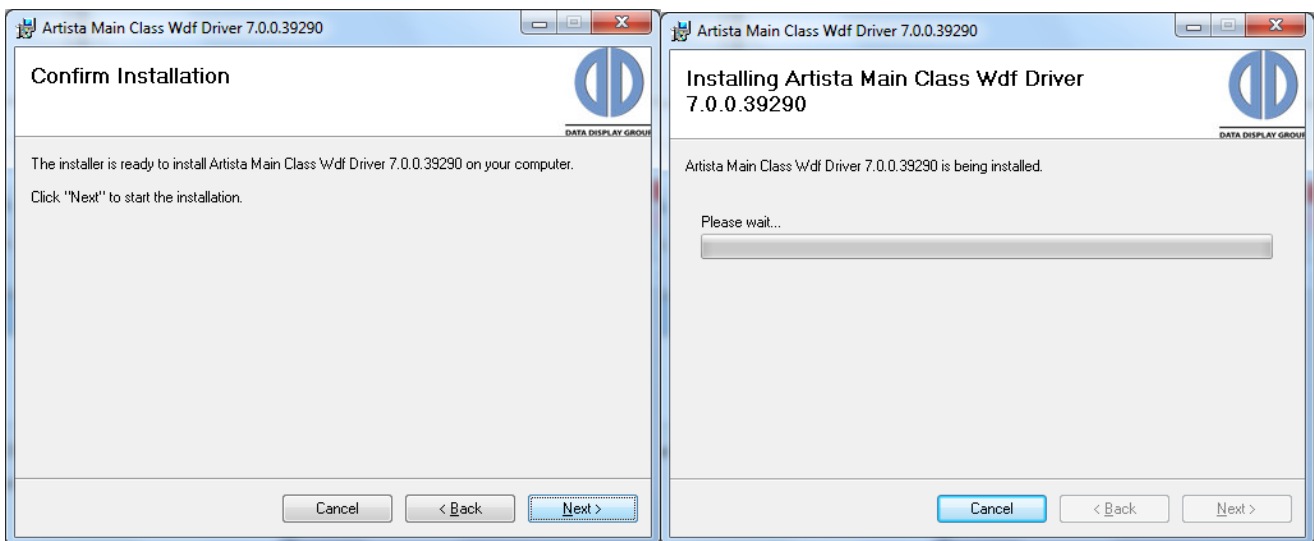
Click "Next".



The dialog box containing the "End-User License Agreement" appears. Select "I Agree / I accept the terms in the License Agreement" and then click "Next".

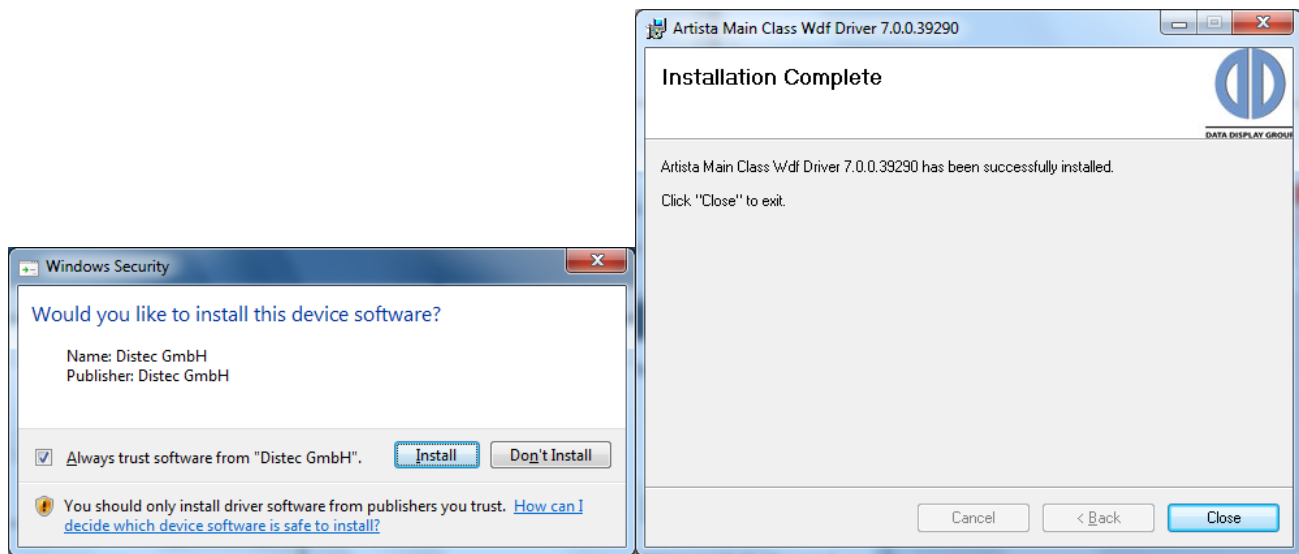


Click "Next" for default folder or "browse" to a different.



Click "Next / Install"

The installation can take several minutes, so do not cancel the installation prematurely. Also, when asked to trust driver, click on "Always trust software", otherwise it will appear again everytime the drivers are installed.



Note: The driver has not passed the Logo testing, so when you are asked if you wish to continue the installation, you need to select "Allow" several times .

Click "Close / Finish".

3.1.2 ArtistaDesktop3D driver

The **ArtistaDesktop3D** driver allows the use of **Artista Display Devices** as Windows desktop extensions. After installing the **ArtistaDesktop3D** driver package, Windows must be restarted.

Limitations:

The Windows graphics subsystem allows the use of up to 16 concurrent display devices, depending on the RAM and video card specifications.

The minimum required system RAM is 2Gb.

The driver limitations allow you to use up to 6 Artista devices as extended desktops.

3.1.2.1 Desktop Assignment

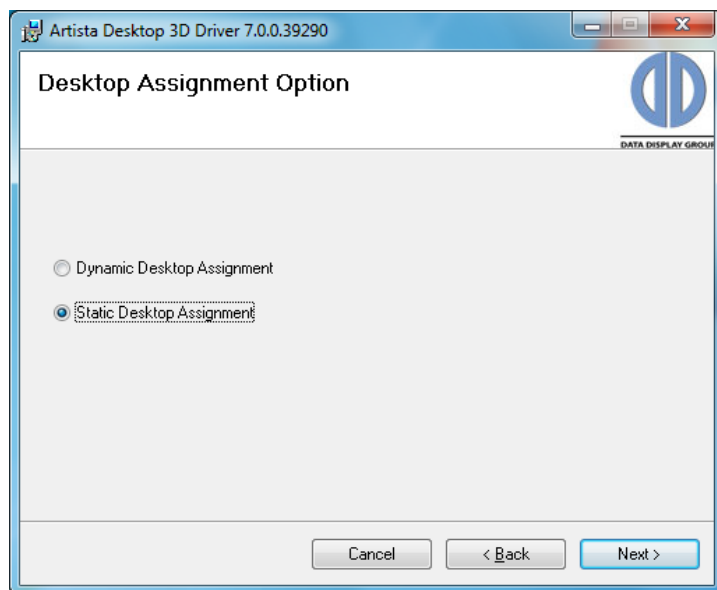
Characteristics:

During installation you are asked to choose the desktop assignment behavior. You can select between **Dynamic Desktop Assignment** and **Static Desktop Assignment**. For further information, please refer to the detailed paragraphs below.

For each Artista device detected, a virtual graphics board called "**Artista Virtual Display**" is created by the service software. This service manages Artista-specific assignments between the virtual graphics boards and Artista devices. It is hereafter referred to as "**Artista Service**" in this document.

If **Dynamic Desktop Assignment** is selected, the image on the external monitor returns to the primary display after disconnecting the cable or powering-off of the external unit.

With **Static Desktop Assignment** selected it is assured that the virtual graphics board persists even after the corresponding Artista device is disconnected. Both the screen content of the external monitor and the positioning of the extended desktop are kept virtually available. When reconnecting the external unit, the original image reappears on the display.



Dynamic Desktop Assignment

If a new **Artista Display Device** is detected, the **Artista Service** assigns it to the next available unassociated virtual graphics card. If there aren't any available, a new one will be installed by the **Artista Service**. This could force a reboot. If an **Artista Display Device** is being disconnected, the **Artista Service** disassociates the virtual graphics card making it available for the next **Artista Display Device** that will be connected. If the service disassociates a virtual graphics card the currently running applications will be minimized and moved back to the primary display!

Static Desktop Assignment

If a new **Artista Display Device** is detected, the **Artista Service** assigns it to an Artista Virtual Display, which is identified by a unique identification number. If the newly connected Artista device hasn't been used with this computer before, a new unique identification number will be installed by the **Artista Service**. This will require a reboot.

This assures that the same physical **Artista Display Device** will always occupy the same Windows desktop display.

If **Static Desktop Assignment** is selected during installation, a unique **Artista Display Device** is assigned permanently to an **Artista Virtual Display** – independent from the current Artista connection state.

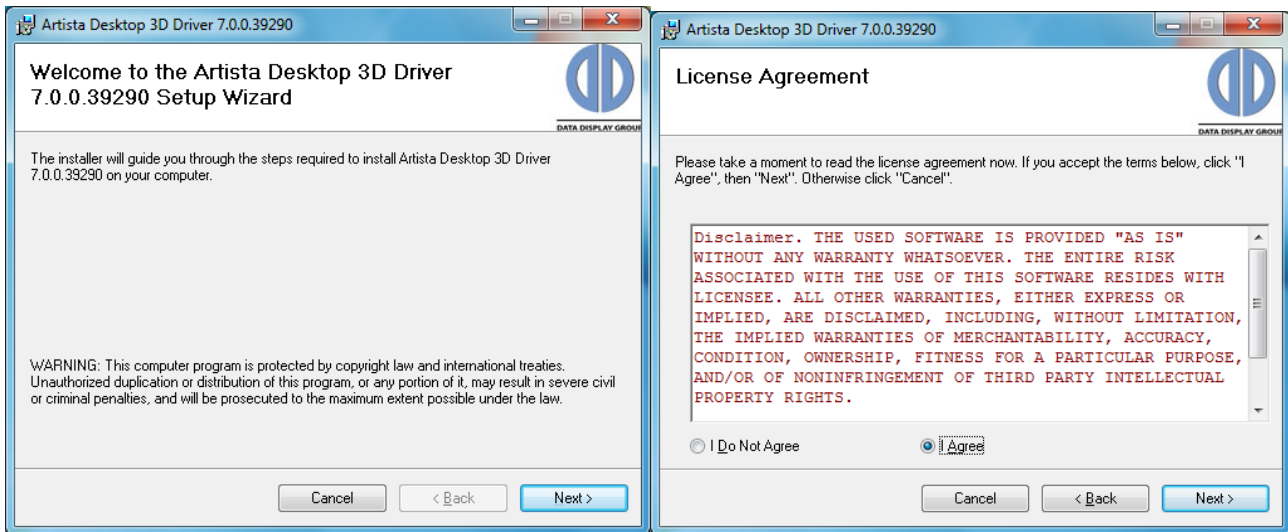
This behavior is comparable to common VGA graphic cards.

Note:

Static Desktop Assignment does not work reliable with **ArtistaUSB** firmware versions below version 4.x. If you are not certain of the firmware version, select **Dynamic Desktop Assignment**.

3.1.2.2 ArtistaDesktop3D driver installation

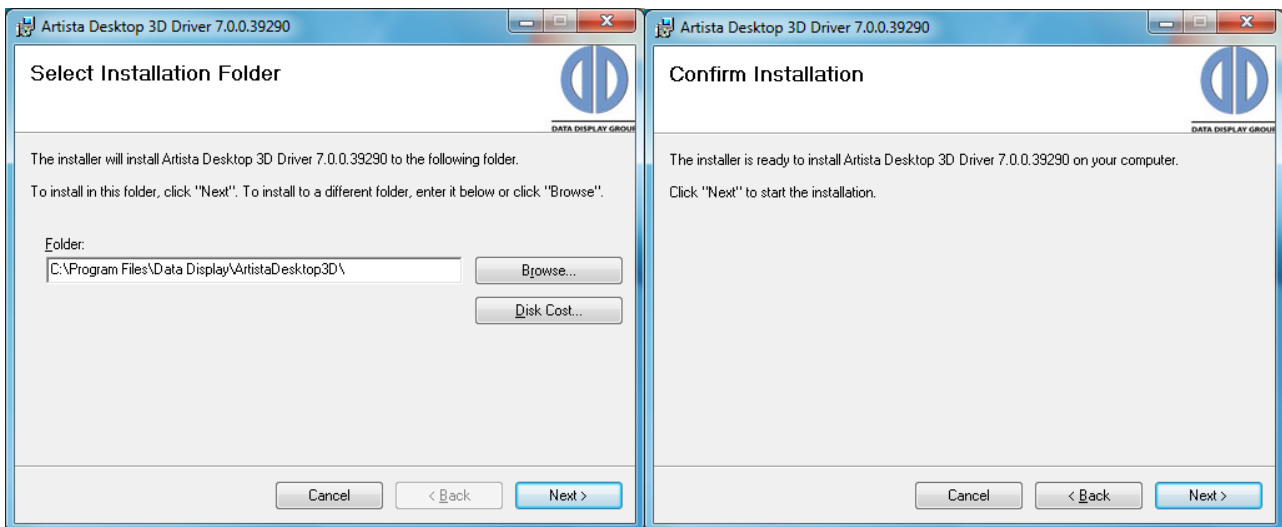
Select the 32/64bit version of the Artista Desktop 3D Diver from "ArtistaDesktop_Driver".



Click "Next" to continue.

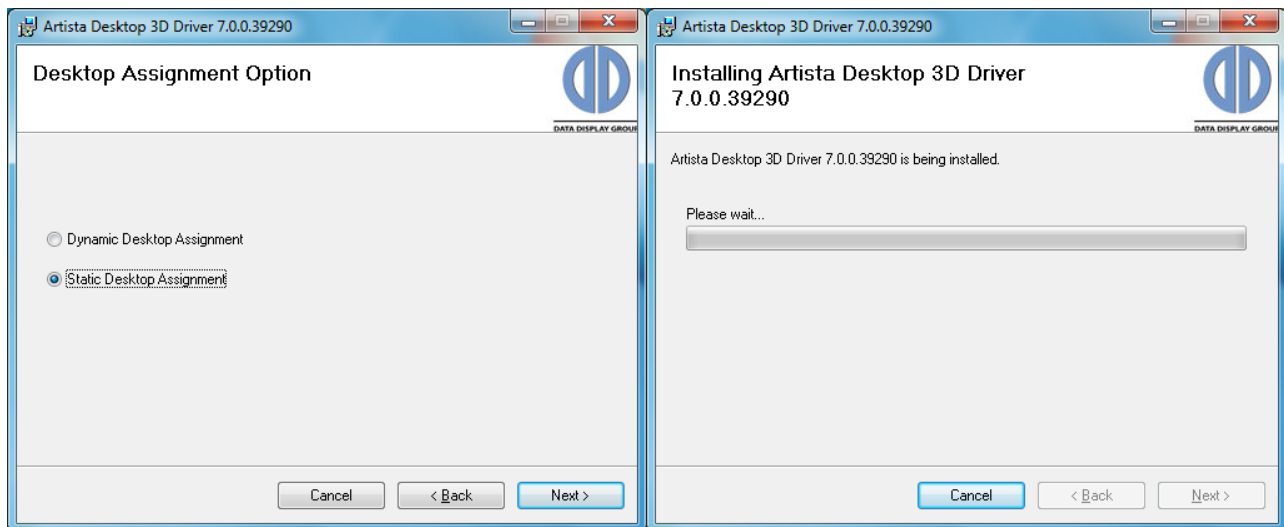
The dialog box "End-User License Agreement" appears.

Select "I Agree / I accept the terms in the License Agreement" and then click "Next"!

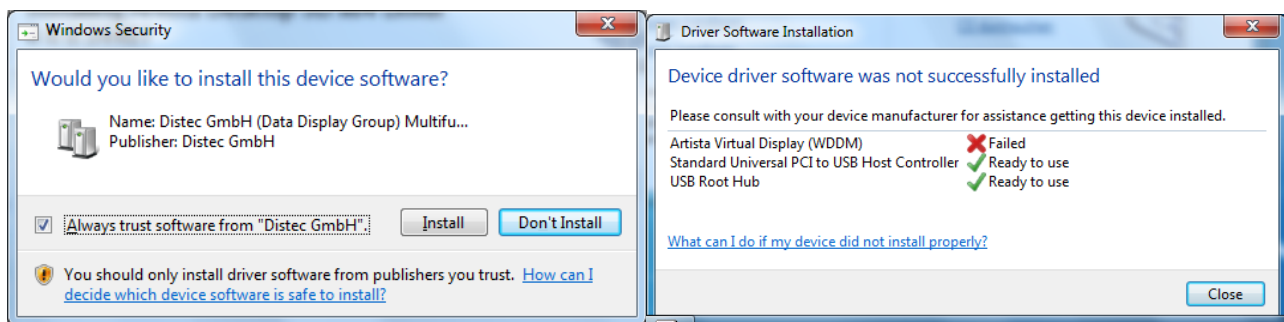


Click "Next" for default folder or "browse" to a different.

Click "Next / Finish" to start the installation.



Select your Desktop Assignment and click "Next".



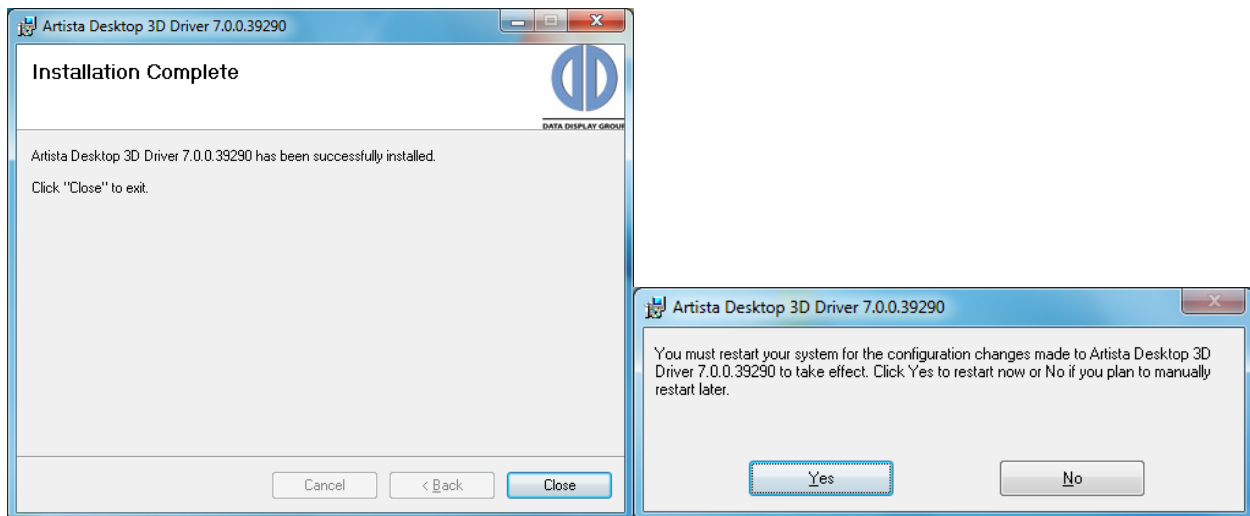
Note:

On Windows 7: For technical reasons, the "Artista Virtual Display (WDDM)" can be installed and fail during the installation of the ArtistaDesktop3D driver package. After the prompted reboot, this is then in working order. Don't be concerned!

Click "Close / Finish".

The driver installation is now complete.

After finishing the installation of the **ArtistaDesktop3D** driver you must **restart** your computer!



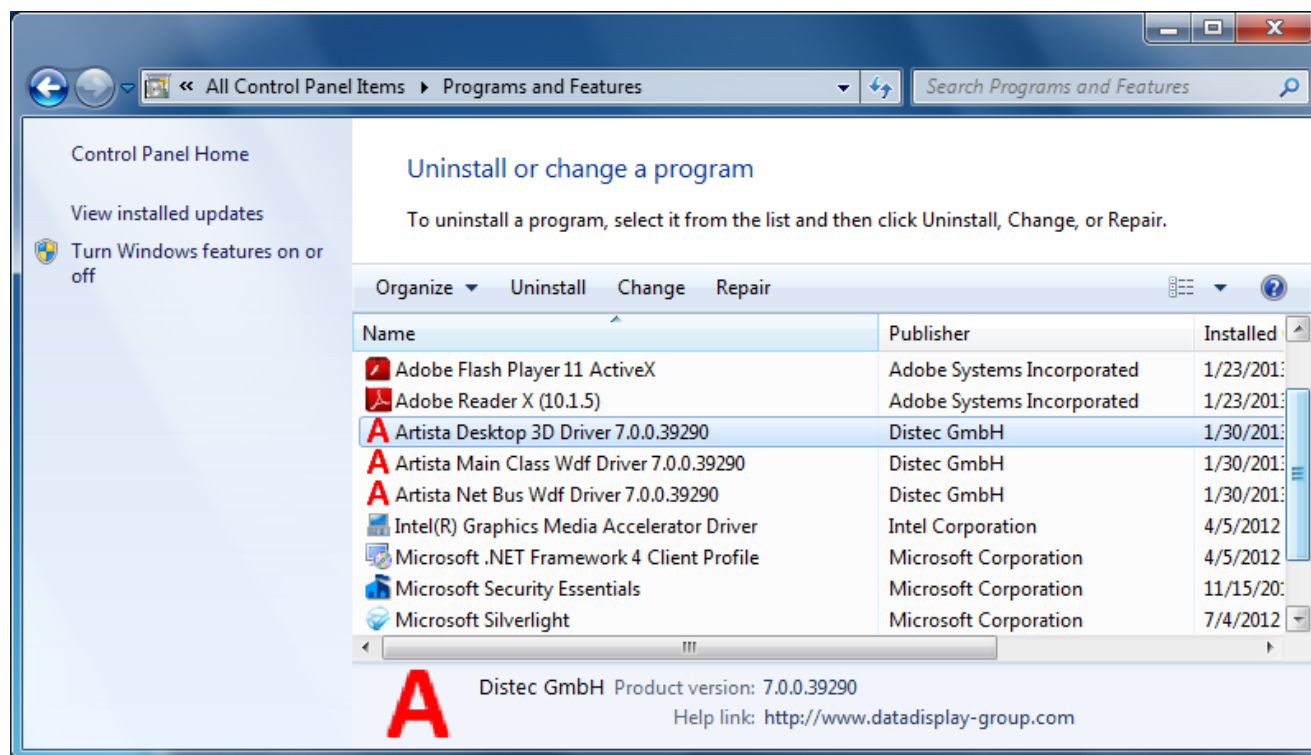
3.1.3 Installation on Windows 8.1

Before installing the Driver on Windows 8.1 Machines a small exe file must be executed.
Please follow these Steps:

Open the folder win81fix
Execute the win82fix.exe

4 Uninstalling the drivers

To uninstall any of the Artista Drivers, select "**Start**" -> "**Control Panel**" -> "**Programs and Features**". Choose the driver you wish to remove from the system: "**Artista Main Class Wdf Driver**" or "**Artista Desktop 3D**".



Now click the "Uninstall" button and follow the instructions.

After uninstalling any of the Artista drivers, you will need to restart the computer to avoid possible device conflicts.

Repeat the process for each additional driver you wish to uninstall.

5 Artista Graphics Driver Usage

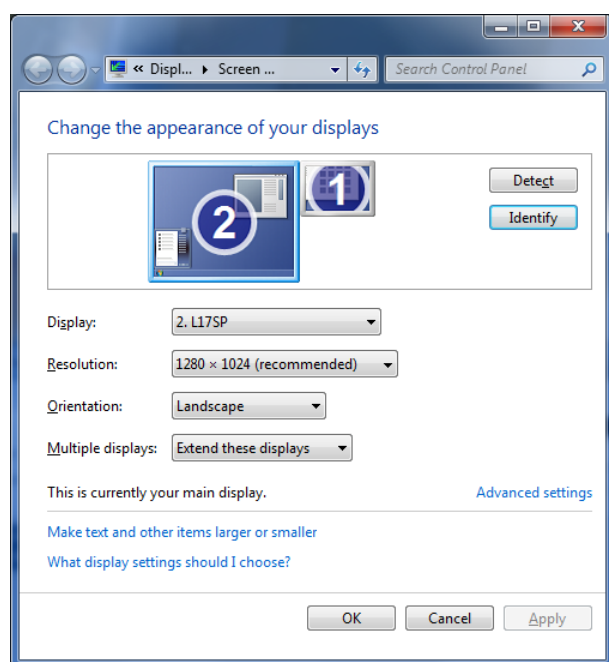
To ensure proper extended desktop functionality, it is required that the **Artista Service** be running. This is indicated by the **Artista Service Icon** (red "A") in the taskbar system tray.



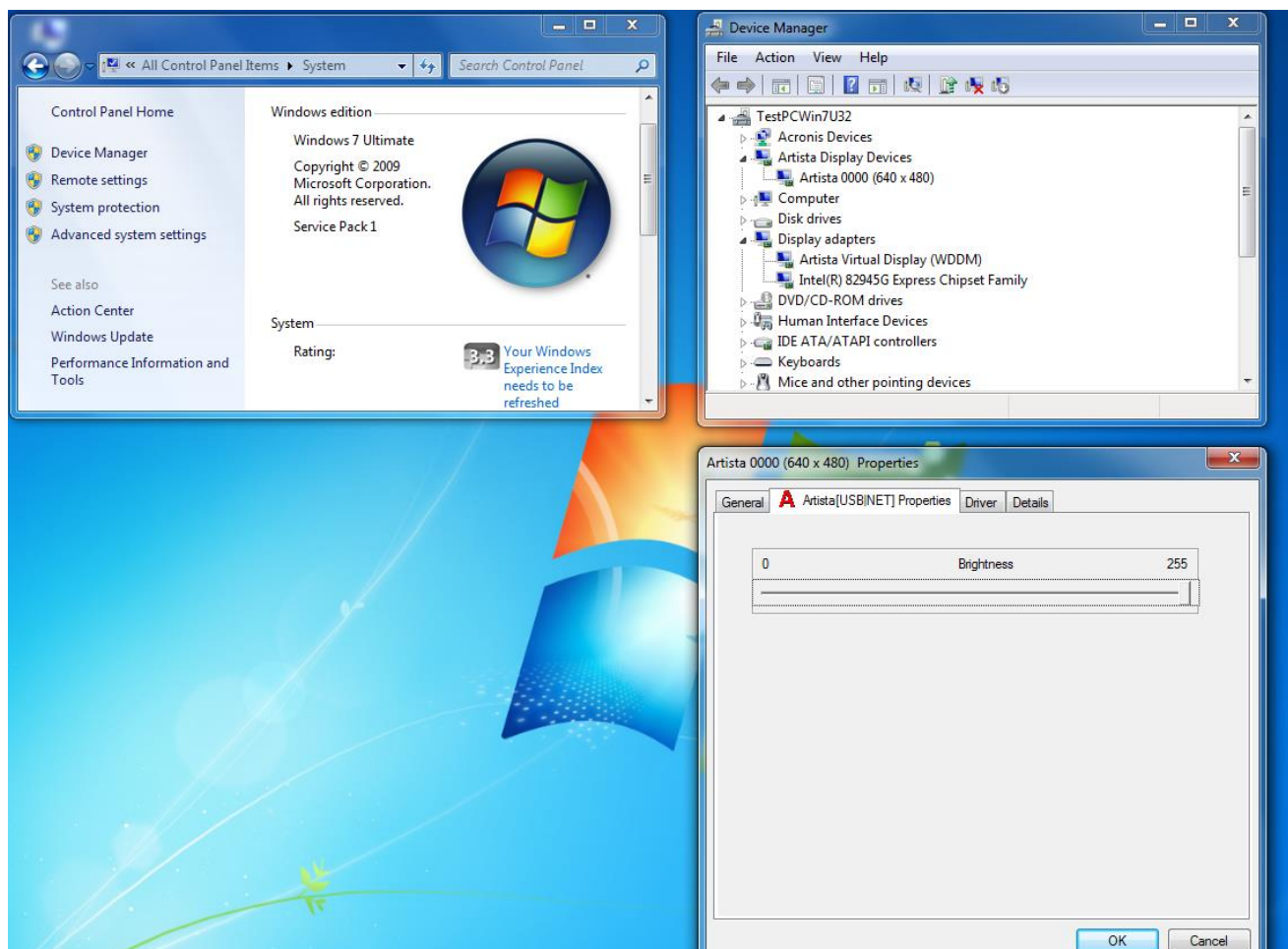
5.1.1 Attach / Detach Artista Devices

Auto Attach

The Artista Desktop Extension driver includes an "auto attach" feature. After a successful installation and system restart, the Artista display device becomes part of the Windows desktop. By default, the Artista displays are attached to the right of the primary display. You can move your Artista display to any position you wish using the drag and drop functionality featured in the "Screen Resolution" dialog.



5.1.2 Artista Devices in the Device Manager



From the Start Menu, select "Control Panel" (small icons) → "Device Manager". When double clicking on the selected **Artista Device**, the corresponding properties window opens. Here you can find the width, height and current desktop position of the **Artista Display Device**¹.

5.1.3 Adjusting the backlight

1. Open the "Control Panel" (small icons) → "Device Manager".
2. Select the Artista card on which you wish to adjust the backlight brightness. Right-click on the icon and select "Properties".
3. Select the tab "Artista(USB|NET) Properties" and adjust the slider at the top.
4. After setting the brightness, click "OK" to save the new brightness setting.

6 Touch screen handling

Instructions regarding the calibration and use of the touch screen are described in an external document. Please refer to the document [Artista_Touch_Calibration.pdf](#), included with this driver package.

¹ Desktop position data is only valid if **Artista Display Device** was attached before. Otherwise garbage data are shown.

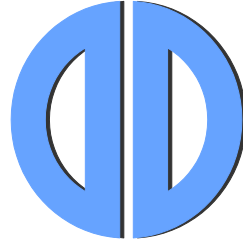
7 News and Updates

The latest version of documents, drivers and software packages can be found at:

German: <http://www.datadisplay-group.de/support/downloads/>

English: <http://www.datadisplay-group.com/support/downloads/>

Our company network supports you worldwide with offices in Germany, Great Britain, Italy, Turkey and the USA. For more information please contact:



DATA DISPLAY GROUP

Distec GmbH

Augsburger Str. 2b
82110 Germering
Germany

Phone: +49 (0)89 / 89 43 63-0
Fax: +49 (0)89 / 89 43 63-131
E-Mail: info@datadisplay-group.de
Internet: www.datadisplay-group.de

Display Technology Ltd.

5 The Oaks Business Village
Revenge Road, Lordswood
Chatham, Kent, ME5 8LF
United Kingdom

Phone: +44 (0)1634 / 67 27 55
Fax: +44 (0)1634 / 67 27 54
E-Mail: info@datadisplay-group.co.uk
Internet: www.datadisplay-group.co.uk

Apollo Display Technologies, Corp.

87 Raynor Avenue, Unit 1 Ronkonkoma, NY 11779
United States of America
Phone: +1 631 / 580-43 60
Fax: +1 631 / 580-43 70
E-Mail: info@datadisplay-group.com
Internet: www.datadisplay-group.com

Sales Partner:

REM Italy s.a.s.

di Michieletto Flavio & C.
Via Obbia Bassa, 10
I-35010 Trebaseleghe (PD)
Italy
Phone: +39 335 521 37 89
E-Mail: info@remitaly.com
Internet: www.remitaly.com

Sales Partner:

iDisplay Görüntüleme Teknolojileri A.Ş.

Kuştepe Mh. Leylak Sk.
Nursanlar İş Mrk., A Blok K: 6 No: 21
Sisli / Istanbul
Turkey
Phone: +90 (0)212 / 356 04 20
Fax: +90 (0)212 / 356 04 25
E-Mail: info@datadisplay-group.com.tr
Internet: www.datadisplay-group.com.tr