



OUR GLOBAL
COMPETENCE
CENTRES

 APOLLO DISPLAY
TECHNOLOGIES



 DISTEC



 DISPLAY
TECHNOLOGY



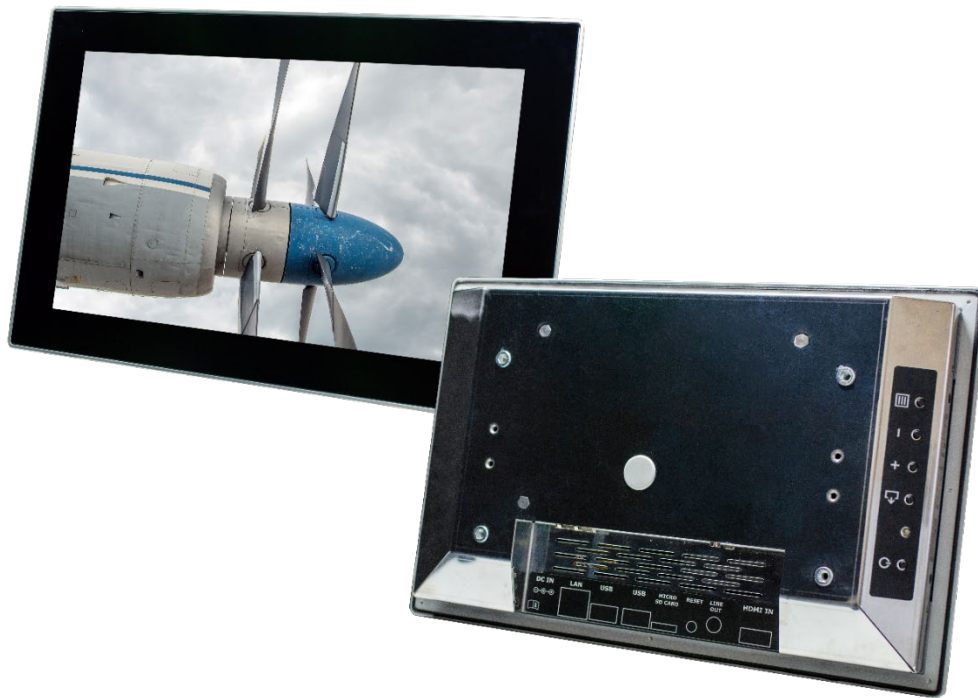
Datasheet

Distec

POS-RP-125-00-PRO

12.5" Monitor with Artista IoT

MO-06-002 (MO-06-052, MO-06-072)



PROSERIES

Version 1.5

13.09.2023



The information contained in this document has been carefully researched and is, to the best of our knowledge, accurate. However, we assume no liability for any product failures or damages, immediate or consequential, resulting from the use of the information provided herein. Our products are not intended for use in systems in which failures of product could result in personal injury. All trademarks mentioned herein are property of their respective owners. All specifications are subject to change without notice.

Table of Contents

1	Revision History	4
2	Description	5
3	Characteristics	6
3.1	Interfaces	6
3.2	OSD Keypad	6
4	Mechanical Drawing	7
5	Optional Accessories	8
5.1	Overview	8
5.2	Mounting Frame	9
5.2.1	Mounting instruction	10

1 Revision History

Date	Rev.No.	Description	Page
10.12.2019	0.1	Preliminary Version	All
20.03.2020	0.2	Corrected viewing angle specs, updated picture	2, 6
24.03.2020	0.3	Updated Typical Power Consumption from "6.04" to "9"	6
13.01.2021	0.4	Revised description, order of characteristics and new cover/last page	5, 6
01.03.2021	0.5	Illustration OSD Keypad added	6
20.05.2021	1.0	Release Version (logos added), WebPoster, VideoPoster	All
12.07.2021	1.1	Software Flyer added	5
27.07.2021	1.2	New Template	All
08.09.2021	1.3	Optional Accessories: Overview	8
21.03.2023	1.4	12-24V	5-6
13.09.2023	1.5	12/24V	5-6

2 Description

Distec's 12.5" POS-RP-125-00-PRO is a CE certified/IP65 proof front monitor solution, featuring the Raspberry Pi CM3+ based TFT platform Artista-IoT. Therefore, it is the perfect solution for Industry 4.0 and Internet of Things projects.

Its robust but slim cover offers all options for integration and various applications. The POS-RP-125-00-PRO is equipped with an industrial high-brightness display and is designed for long term availability.

The POS-RP Series features:

- an integrated 10 finger PCAP touchscreen
- integrated passive cooling, which allows operating the system under full load even at high ambient temperatures
- VESA Mounting holes for using it as an HMI, mounted on a swivel arm or monitor stand
- As Option: in-wall mounting frame for a variety of integrations in concrete, wooden, or drywall constructions

Artista-IoT offers all advantages of a modern ARM processor platform:

- driven by single 12/24V power supply
- in comparison to RaspberryPi standard industrial functions like Real-Time-Clock and others
- Basis configuration: CM3+/8GB (optional 16GB or 32GB)
 - Note: Due to the market situation, Distec reserves the right to install the respective CM3 + module available on the market in the series so that the delivery capability of the POS-XX-PRO series can be improved
- Standard configuration: Raspian
- LAN, HDMI-IN 1.4, 2xUSB as front interfaces, Micro-SD card reader
- An OSD keypad for full access to OSD menu board (→ [PrismaMedia-Eco Datasheet](#))
- *As Option*: Wireless - or Bluetooth adapters to be connected via LAN or USB

Available Software:

The Monitors with VideoPoster or WebPoster as optional Application-Software can be ordered with the following part no MO-06-052 (VP) or MO-06-072 (WP).

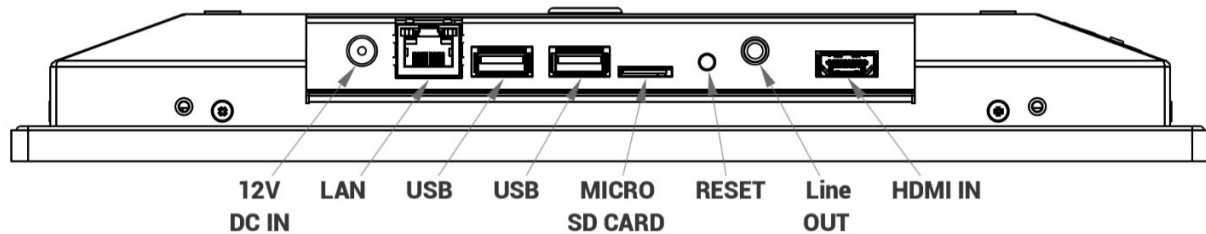
Users are able to program their own applications on a Raspberry Pi basis or using all operating systems and application programs, which are supplied and supported by the large community.

More details regarding available application software and operating systems can be found in the [flyer](#).

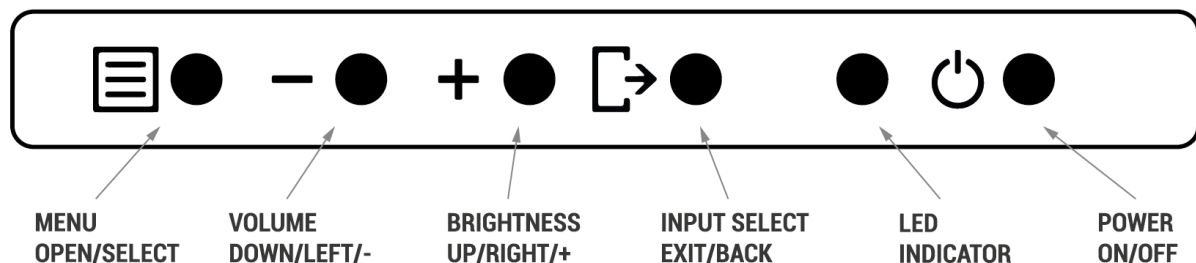
3 Characteristics

Items	Unit	Specification
Screen Diagonal	[inch]	12.5
Pixels H x V		1920 x 1080
Supported Colors		262K (6bit color)
Brightness	[cd/m ²]	240
Viewing Angle	v/h	80/80/80/80
Nominal Input Voltage	[V]	12/24V
Typical Power Consumption	[W]	9
Electrical Interface		USB, Audio, SD Card, Ethernet RJ45, HDMI
PCAP Touchscreen Touchpoints	finger	10
Storage Temperature	[°C]	-20 to +60
Operating Temperature Range	[°C]	0 to +50
IP rating		Front IP65
Physical Size H x V x D	[mm]	320 x 206.5 x 31.9
Active Area H x V	[mm]	276.48 x 155.52
Weight	[kg]	1.6

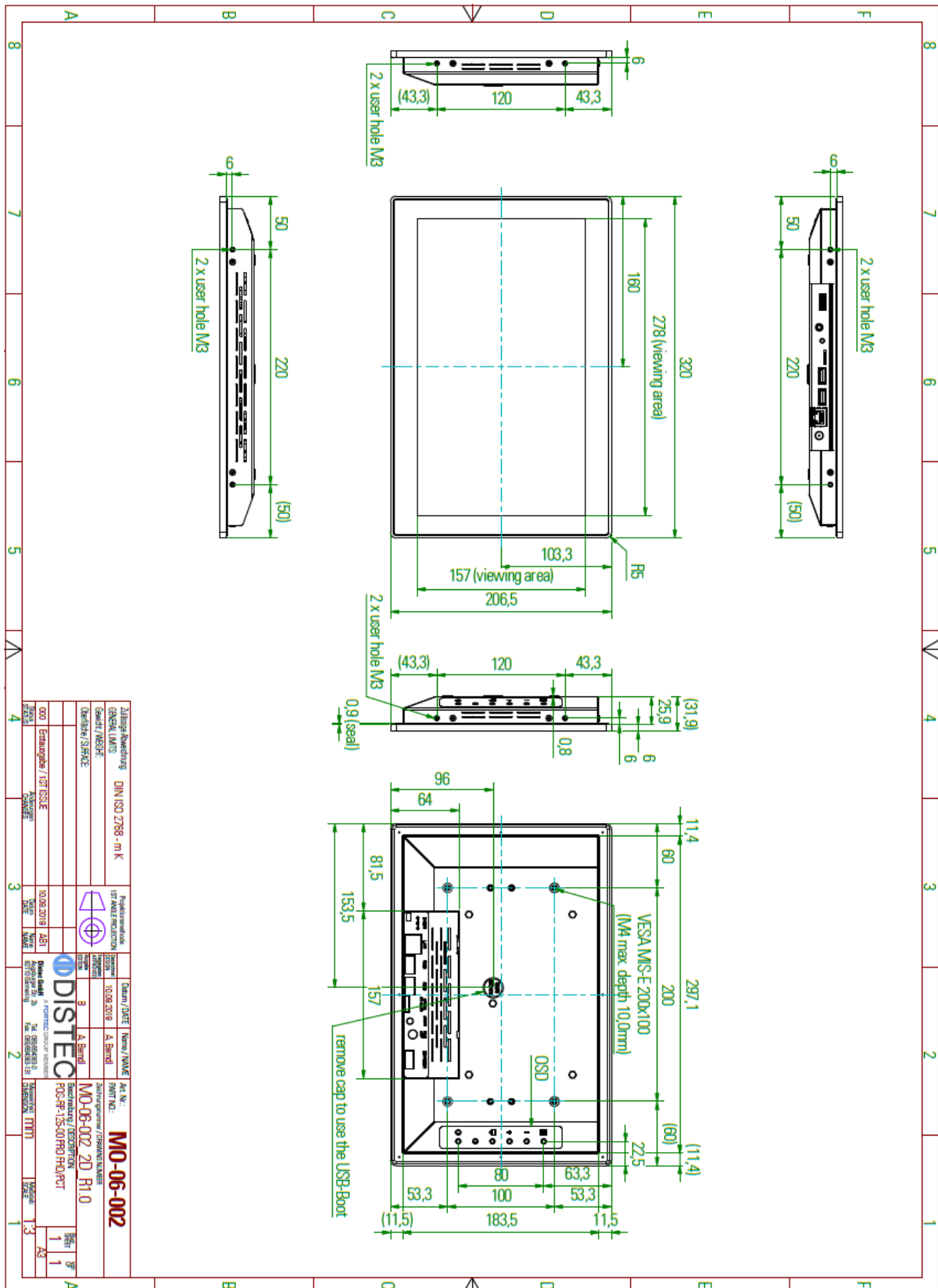
3.1 Interfaces



3.2 OSD Keypad



4 Mechanical Drawing

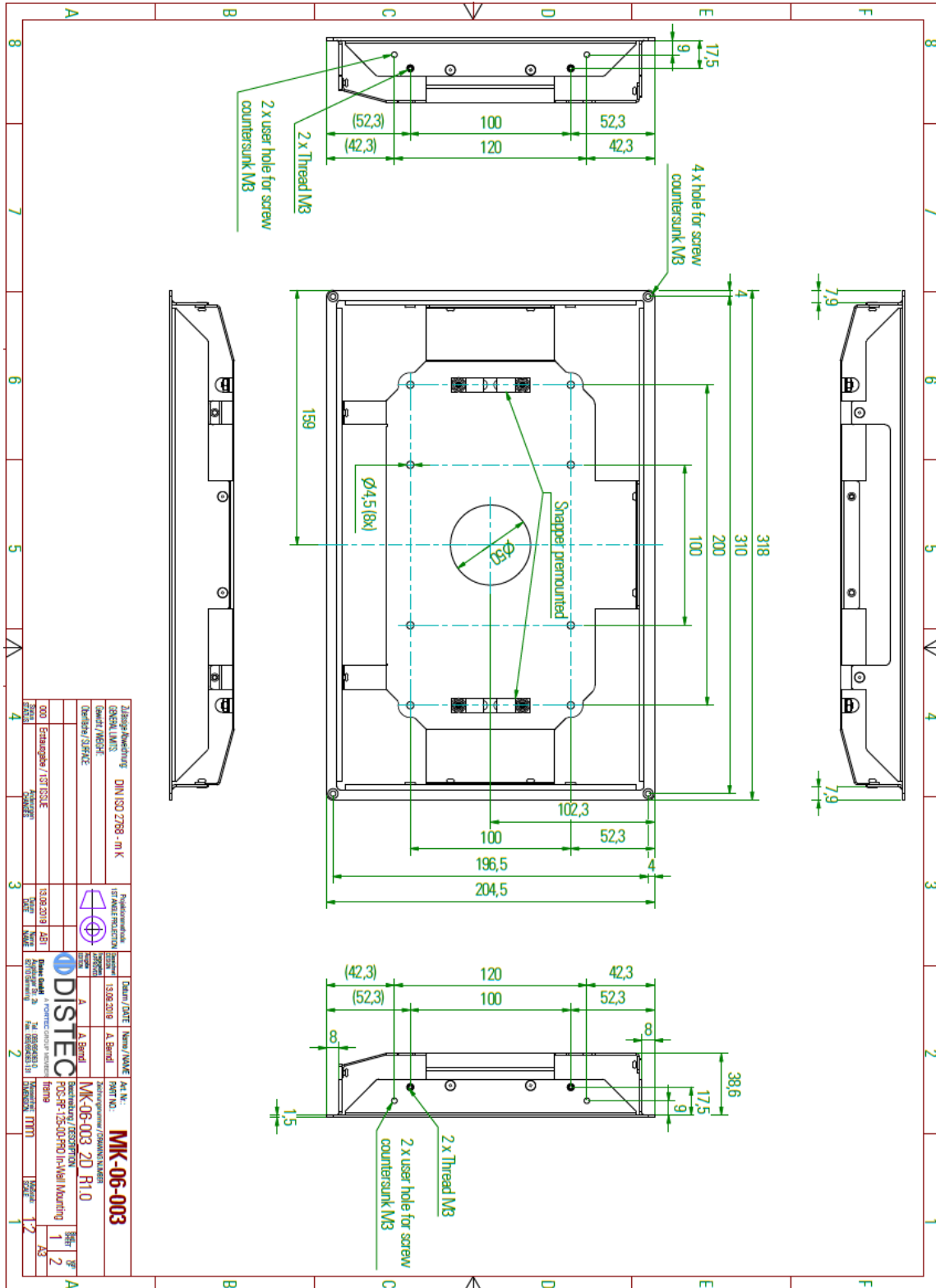


5 Optional Accessories

5.1 Overview

Mounting		
In-Wall Mounting Frame	MK-06-003	POS-RP-125-00-PRO In-Wall mounting Frame
Power Supply Unit		
PSU 12V/5A	NT-01-062	AC Adapter CWT KPL-060F-VI(C14/12V5A)2,1
Power Cord EU	DB-07-225	IEC PowerCord (EU-C13) 3x0,75 black 1,8m
Power Cord UK	DB-07-226	Power Cord (UK - C13) black 1,8m
Power Cord USA	DB-07-238	Power Cord (US-C13) black 1,8m/6 feet
Other		
WiFi	PC-05-071	DELOCK 12462 WLAN Stick/Antenna USB 2.0
Micro SD-Card	PC-04-030	microSDHC CARD 16GB SANDISK ULTRA 80MB/S

5.2 Mounting Frame



5.2.1 Mounting instruction

The enclosed snappers must be pre-assembled on the basic unit

2 x snapper mounted with Countersunk M4x6

11,2

Mounting dry wall/cement

305,1

191,5

cutout depth 40,0mm

mounting holes

Mounting on plate (frontmount)

310

196,5

305,1

191,5

R5

mounting holes

rigid mounting option (no snap solution) use of distance bolts M4x12 and screws M4 (Only accessible for installation of the device from behind)

Additional mounting options via side holes and threads

Additional mounting options via side holes and threads

Additional mounting options via side holes and threads

Zielgruppe/Anwendung: DIN ISO 2798 - m K		Produktionsjahr: 13.09.2019		Datum / DATE: 13.09.2019		Name / NAME: A-Bend		Art. Nr.: MK-06-003	
GENRAU LÄSERN		100% FÄHIGKEITSPROBATION		13.09.2019		A-Bend		Zustimmung / DRAWING NUMBER: MK-06-003 2D R1.0	
Gezeichnet / DRAWN: A-Bend		Geprüft / CHECKED: A-Bend		13.09.2019		A-Bend		Beschreibung / DESCRIPTION: POS-RP-125-00-PRO FHD/CT Incl. Mounting frame	
000		Estimote / ESTIMOTE		13.09.2019		A-Bend		Reihen / ROW: 2	
200		Estimote / ESTIMOTE		13.09.2019		A-Bend		Spalten / COLUMN: 2	
300		Estimote / ESTIMOTE		13.09.2019		A-Bend		Reihen / ROW: 2	
400		Estimote / ESTIMOTE		13.09.2019		A-Bend		Spalten / COLUMN: 2	
500		Estimote / ESTIMOTE		13.09.2019		A-Bend		Reihen / ROW: 2	
600		Estimote / ESTIMOTE		13.09.2019		A-Bend		Spalten / COLUMN: 2	
700		Estimote / ESTIMOTE		13.09.2019		A-Bend		Reihen / ROW: 2	
800		Estimote / ESTIMOTE		13.09.2019		A-Bend		Spalten / COLUMN: 2	
900		Estimote / ESTIMOTE		13.09.2019		A-Bend		Reihen / ROW: 2	
1000		Estimote / ESTIMOTE		13.09.2019		A-Bend		Spalten / COLUMN: 2	

Our company network supports you worldwide with offices in Germany, Austria, Switzerland, the UK and the USA. For more information please contact:

Headquarters

Germany



FORTEC Elektronik AG

Augsburger Str. 2b
82110 Germering

Phone: +49 89 894450-0
E-Mail: info@fortecag.de
Internet: www.fortecag.de

Fortec Group Members

Austria



Distec GmbH Office Vienna

Nuschingasse 12
1230 Wien

Phone: +43 1 8673492-0
E-Mail: info@distec.de
Internet: www.distec.de

Germany



Distec GmbH

Augsburger Str. 2b
82110 Germering

Phone: +49 89 894363-0
E-Mail: info@distec.de
Internet: www.distec.de

Switzerland



ALTRAC AG

Bahnhofstraße 3
5436 Würenlos

Phone: +41 44 7446111
E-Mail: info@altrac.ch
Internet: www.altrac.ch

United Kingdom



Display Technology Ltd.

Osprey House, 1 Osprey Court
Hinchingsbrooke Business Park
Huntingdon, Cambridgeshire, PE29 6FN

Phone: +44 1480 411600
E-Mail: info@displaytechnology.co.uk
Internet: www.displaytechnology.co.uk

USA



Apollo Display Technologies, Corp.

87 Raynor Avenue, Unit 1
Ronkonkoma, NY 11779

Phone: +1 631 5804360
E-Mail: info@apolloDisplays.com
Internet: www.apolloDisplays.com